

This topic explains the various fields and features of the **Full Boolean** tab on the **Core Database Query** dialog box. This tab helps you to develop complex search phrases in order to pinpoint specific information in the **Core Database**.

You can access the **Full Boolean** tab from either the column view or the form view. To access the **Full Boolean** tab:

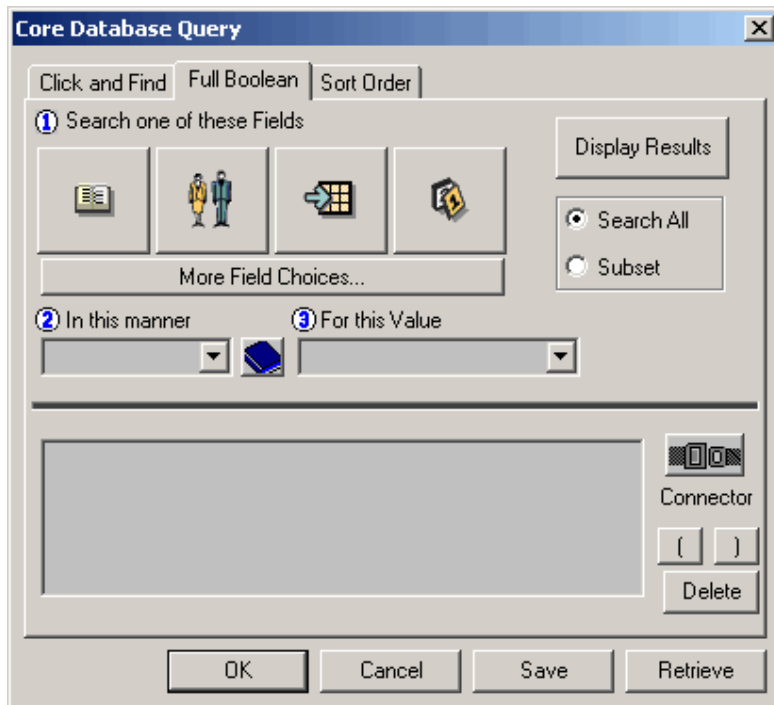
- On the toolbar, click **Boolean**.



- From the **Search** menu, select **Full Boolean**.
- On the toolbar, right-click **Search** and select **Full Boolean**.
- On the toolbar, right-click within the **Search** box and select **Full Boolean**.
- In the **Case Explorer**, right-click **Core Database** and select **Full Boolean Search**.

Any of the actions listed above will display the **Full Boolean** tab on the **Core Database Query** dialog box. The table beneath the figure describes the items on this tab.




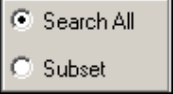
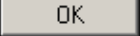
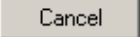


Core Database Query Dialog Box, Full Boolean Tab



Notice that the tab contains numbered "steps" to help guide you through the process and logic of creating a **Full Boolean** search. When you click **Connector**, a fourth step is added, providing a drop-down list of options such as **AND**, **OR**, **AND NOT**, and **OR NOT**. These are items that you can select to specify the relationship between your search phrases.

## Using the Full Boolean Tab

Figure	Item	Description
	Anytext	Click the <b>Anytext</b> button if you want to search for a term or phrase in any database field.
	Author	Click the <b>Author</b> button to search for a name in the <b>Author</b> field.
	Issues	Click the <b>Issues</b> button to search for issues in the <b>Issues</b> field.
	Docdate	Click the <b>Docdate</b> button to search for dates in the <b>Docdate</b> field.
<u>More Field Choices...</u>	More Field Choices	Click <b>More Field Choices</b> to select another field to search.
	In this manner drop-down list	Select an item in the <b>In this manner</b> list to specify how you want CT Summation iBlaze to search for your search item. The items in the list change depending on the field you want to search.
	Lookup table	Click the button between the <b>In this manner</b> and the <b>For this Value</b> boxes to display the lookup table associated with the field in which you are searching. The appearance of the button differs depending upon the field you are searching. If you are searching <b>Anytext</b> , the <b>Database Vocabulary</b> is displayed when you click this button. If you are searching <b>Author</b> , the <b>Author</b> lookup table is displayed. If you are searching <b>Issues</b> , the <b>Issues</b> lookup table is displayed. Finally, if you are searching <b>Docdate</b> , the <b>Document Date</b> calendar is displayed.
	For this Value drop-down list	The <b>For this Value</b> drop-down list contains the last few values that you searched for. You can use this list to select a recent option. In addition, the <b>For this Value</b> box displays the item that you select from a lookup table.
<b>AnyText Contains earthquake</b>	Staging box	The staging box shows each of your search clauses as they are built.
	Connector	Click the <b>Connector</b> after you create your search clause to display the <b>Connect with</b> drop-down list.
	Connect with drop-down list	Select <b>AND</b> , <b>OR</b> , <b>AND NOT</b> , or <b>OR NOT</b> to specify how you want CT Summation iBlaze to search for your next search phrase in relation to the one that precedes it.

	Parentheses	Select a clause and click the <b>Parentheses</b> to denote precedence of that clause, so that it is evaluated first. Parentheses also help to group elements of your query together.
	Delete	If you need to delete a clause, select the clause and click <b>Delete</b> .
	Display Results	When you are finished building your search, click <b>Display Results</b> . The <b>Core Database Query</b> box closes and your search results are displayed.
	Type of search	Click <b>Search All</b> to search the entire <b>Core Database</b> , or click <b>Subset</b> to perform a secondary search on an existing set of records.
	OK	Click <b>OK</b> when you are finished using the <b>Core Database Query</b> dialog box. If you do not want to save your search, you can also click <b>OK</b> to begin your search.
	Cancel	Click <b>Cancel</b> to exit the <b>Core Database Query</b> dialog box without running, saving, or retrieving a search.
	Save	Click <b>Save</b> to save a search that you built for easy recall later.  <b>Note:</b> <i>If you want to save a search, make sure to click <b>Save</b> before you click <b>Display Results</b>.</i>
	Retrieve	Click <b>Retrieve</b> to recall a saved search.

## Search Connectors

A search connector is used between two search terms or phrases that defines the way CT Summation iBlaze will search for the different items. The following table outlines the different connectors, their syntax, and results of a sample search.

### Search Connectors

Operator	Syntax	Example	Results
AND	AND &	flood AND damage flood & damage	Results containing both the words <b>flood</b> and <b>damage</b> .
OR	OR \	flood OR damage flood \ damage	Results containing the word <b>flood</b> or the word <b>damage</b> .

You can use parentheses in your search to group clauses together, similar to a mathematical equation. For example, if you want to locate records containing the word **Moss** and the key words **flood**, **damage**, or **yard**, you could use either of the following search phrases:

Moss & (flood \ damage \ yard)

Moss AND (flood OR damage OR yard)

**Note:** The spelling of a search connector IS case sensitive. In other words, you must type **AND** and **OR**, rather than **and** and **or** in the **Search** box.